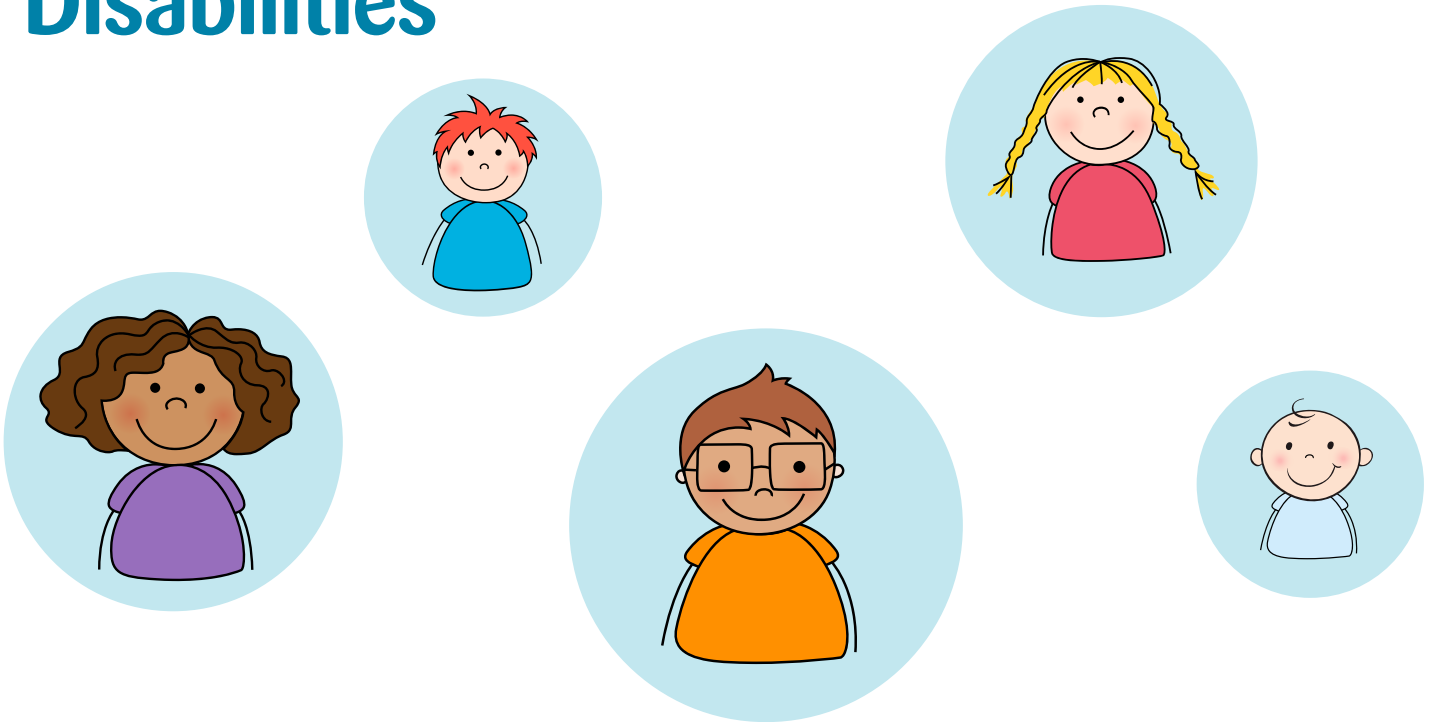


Have your say about developing new specialist provision for children and young people with Special Educational Needs and Disabilities



Tell us how this might affect you.

Online: www.leicestershire.gov.uk/send-consultation

For general enquiries or comments about this consultation phone
0116 305 7150 or e-mail **SEND-Consultation@leics.gov.uk**

Public consultation: Please submit your views by midnight on
Sunday 31 March 2019

What is the council consulting about?

We are proposing to create new specialist provision for children and young people who have special educational needs and disability (SEND). Our proposals include expanding our existing special schools and enhanced resource bases in mainstream schools, and developing new enhanced resource bases for children with communication and interaction difficulties, including Autism Spectrum Disorder (ASD) and for social, emotional and mental health needs known as SEMH. Enhanced Resource bases are small specialist facilities with specialist staff where children can benefit from smaller teaching groups and extra help, whilst still having access to the mainstream school for certain activities. This can help to give each child a personal timetable that is geared to their learning, emotional and social needs.

Longer term we would also like to open up to four new special schools.

Further details on these proposals are outlined on page 4 of this document

Before we progress any further we would like to know what you think about our proposals and how effective you think these will be to help meet the increasing demand for places for children and young people with SEND.

We would also like to hear your views on how you think our proposals might impact on you. In giving your views we would also ask that you consider the financial context of Leicestershire County Council and how we make the best use of the budgets available to us.

Who are we consulting with?

Anyone is welcome to have their say on these proposals. However, we would especially like to hear from groups including:

- Children and young people in Leicestershire with SEND and their parents/carers.
- Governing bodies of maintained schools, including special schools and maintained nursery schools.
- Governing bodies and trustees of academies.
- Governing bodies, proprietors or principals of post-16 institutions.
- Providers of relevant Early Years education.
- Governing bodies, proprietors or principals of other schools and post-16 institutions that are likely to be attended by children and young people from Leicestershire.
- The Schools' Forum.
- The Youth Offending Service.
- Other agencies or organisations providing support for children and young people with SEND e.g. health, voluntary services etc.
- Professional organisations representing particular areas of SEND need.

The council will also have regard to the relevant Joint Strategic Needs Assessment and Health and Well-being Strategy as part of the consultation and developments.

Why change?

Nationally there is now an increasing demand for places in specialist education provision for children and young people with SEND needs.

The last five years have been characterised by a rapid and unprecedented rise in demand for services for children with SEND. Data published by the Department for Education shows that between 2014 and 2018 the number of children and young people with an Education, Health and Care Plan (EHCP) or statement of SEN increased by 35% from 237,111 to 319,819. This is in stark comparison with the previous five years (2010 to 2014) in which the number of children and young people with statements / EHCPs increased by just 4%. The data published by the DfE is based on a data collection in January 2018. In addition there are now about one million children and young people not on a plan but requiring SEN support.

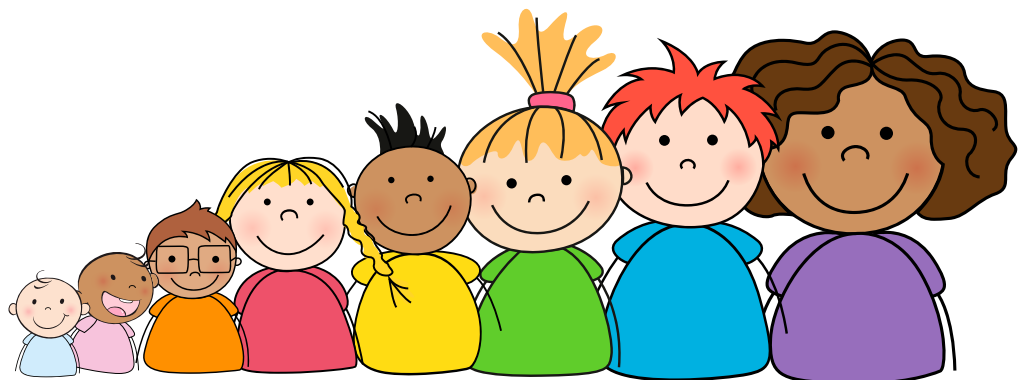
In Leicestershire the position also reflects the national picture. Our forecast tells us that over the next few years demand for specialist education places will continue to increase - we believe by up to 22% over the next five years.

The further anticipated growth will place an unprecedented demand on our available budgets we therefore need to ensure that we take action now to ensure that we use the funds available to us wisely and, more importantly, ensure that every child has access to appropriate education provision to meet their needs.

The development of more provision will help improve choice for parents/carers and pupils, and will have the added benefit of enabling pupils to be educated in their locality/community. This may also bring added benefits to families, for example reducing the journey to school. It is not envisaged that the new provisions will meet everyone's need and we will continue to place pupils in other specialist provision where there is a need to do so, and this is agreed as in the child's or young person's best interests.

We are mindful that one of the challenges for Leicestershire has been the lack of enough specialist places in our schools. Having specialist resources and staff working in and alongside mainstream schools will help to share expertise so that all providers in the area can benefit from the knowledge and advice available. It is also important that children should have the opportunity to be educated as close as possible to their local communities. We believe that by tackling this and developing more provision we will not only improve choice for parents/carers and pupils but we will also make better use of the funding available.

As a consequence of the rising demand, we have already taken some action. Last summer we opened new ASD resource provisions at All Saints CE Primary School in Wigston, Hinckley Academy and Rawlins Academy in Quorn. Prior to this, in the summer of 2017 we also opened the new Birkett House Special School building. We are grateful to the support given by parents/carers and other organisations in shaping the development of these new provisions. However, whilst we have made some progress to help meet the additional demand there is still much more to be done.



How does this fit with the SEND Strategy?

In March 2018 Leicestershire County Council's Cabinet agreed the Leicestershire SEND Strategy 2017/20 www.leicestershire.gov.uk/sites/default/files/field/pdf/2018/6/22/Leicestershire-SEND-Strategy-2017-20.pdf

The strategy sets the scene clearly with a vision for children and young people with SEND to achieve well in their education, to be cared for in safe and supportive families, participate and be involved in their communities and lead happy, safe and fulfilled lives. In particular, priority three of the strategy aims to:

Improve the quality and sufficiency of SEND education provision and services by:

- *Supporting mainstream schools and settings to develop their SEND provision:*
- *Developing local specialist services to ensure sufficiency of places in high quality specialist provision across a continuum*

The county council is committed to working with all partners, including the Parent Carer Forum, schools, academies, further education providers and health to support effective inclusion in mainstream provision. We will do this by working together to make sure that all staff have the right skills, resources and support that they need to provide children and their families with help as early as possible.

The proposals in detail

We have a statutory duty to meet the needs of children and young people with special educational needs and disabilities, in particular to ensure that good quality places are available for everyone.

Children and young people who attend specialist education provision will have an Education, Health and Care Plan (EHCP), which identifies their primary area of need, this will continue to be the case for the new provisions.

Our data and research shows that whilst demand for SEND places is increasing overall there is a particular need for pupils having communication and interaction (primarily Autism Spectrum Disorder) and also those having social emotional and mental health needs (SEMH). These two particular areas of need form a priority for the development of new provision and meeting identified areas of need.

To address the current gaps in our provision we are proposing to:

- Add a further 80 places to our existing six special schools, which are all rated 'good' or 'outstanding' by Ofsted.
- Create more places in our existing specialist resource bases located in mainstream schools.
- Open up to 15 new resource bases in mainstream schools, five of which could meet ASD needs and the remaining 10 for SEMH needs.
- Build three new special schools to include an 80 place school for communication and interaction/ ASD needs and two 50 place schools for SEMH needs.

Longer term we believe there is a need for a new area special school to meet the needs of pupils arising from housing growth across Leicestershire.

Our plans are ambitious and challenging and represent a significant capital investment spanning a five year period.

For our plans to be successful we will need to continue to work in close partnership with our schools, other providers and agencies, for example health and those that have an interest in meeting the needs of children and young people with SEND. The view of parents/carers and pupils who attend our schools or may do so in the future will also be of great value to us in delivering our plans.

How the consultation will work?

The consultation will run from Monday, 7 January 2019 and ends at midnight on Sunday, 31 March 2019.

The consultation is intended to seek your views on how the new provision should be developed.

Our pupil data already tells us what type of provision we need and where it should be broadly located. However, we would like to hear your views on how this new provision should look, how it should feel and how it might operate. This is explained further on the response form accompanying this consultation.

To support the consultation we will be holding a series of meetings for specialist groups to provide more information and to help views to be submitted. These meetings will encompass discussions with parents/carers and pupils, current providers and their staff and organisations representing particular areas of SEND need. In addition, we plan to hold workshops in the following locations and at the times given to allow the opportunity for everyone to drop in and find out more. There is no need for you to book a place at any of the following meetings.

DATE	TIME	VENUE
Tuesday 26 February	6.00pm – 8.00pm	Birkett House School, Station Road, Wigston LE18 2DT
Wednesday 27 February	1.00pm – 3.00pm	Birch Wood School Grange Drive, Melton Mowbray LE13 1HA
Tuesday 5 March	6.00pm – 8.00pm	Ashmount School Thorpe Hill, Loughborough LE11 4SQ
Wednesday 6 March	1.00pm - 3.00pm	Forest Way School Warren Hills Road, Coalville LE67 4UU
Wednesday 6 March	6.00pm - 8.00pm	Dorothy Goodman School New Upper Building Barwell Lane, Hinckley LE10 3DR

To submit your views, please fill out the consultation survey online

www.leicestershire.gov.uk/send-consultation

Please ensure your response is submitted by midnight on Sunday, 31 March 2019 at the very latest.

If you need help to complete the response form or have any questions about the consultation please call **0116 305 7150** or email **SEND-Consultation@leics.gov.uk**. Paper copies of the survey are available on request.

What happens next?

Following the consultation, a report detailing the outcome of the consultation will go back to Leicestershire County Council's Cabinet for its consideration and to make a decision on how the proposals should be implemented. Please be assured that we will keep you informed of progress.

Thank you

You can view the latest information in a number of ways

Visit us online at www.leicestershire.gov.uk/send-consultation

Our web pages will be kept up-to-date with the latest information and developments. You'll also be able to access the survey here.

Send an email to SEND-Consultation@leics.gov.uk to register for the latest news and updates.

Follow us [@leicscountyhall](https://twitter.com/leicscountyhall) for general updates from the council, including the developments on the budget.

Alternatively, you can telephone **0116 305 7150** to ask for information in printed or alternative formats.

જો આપ આ માહિતી આપની ભાષામાં સમજવામાં થોડી મદદ ઇચ્છતાં હો તો 0116 305 7150 નંબર પર ફોન કરશો અને અમે આપને મદદ કરવા વ્યવસ્થા કરીશું.

જેકર તુહાનું ઇસ જાણકારી નું સમજણ વિચ લુહ મદદ ચાહીદી હૈ તાં કિરપા કરકે 0116 305 7150 નંબર તે ફોન કરે અટે અસીં તુહાડી મદદ લઈ કિસે દા પુષ્ટિ કર દવાંગે।

এই তথ্য নিজের ভাষায় বুঝার জন্য আপনার যদি কোন সাহায্যের প্রয়োজন হয়, তবে 0116 305 7150 এই নম্বরে ফোন করলে আমরা উপযুক্ত ব্যক্তির ব্যবস্থা করবো।

اگر آپ کو یہ معلومات سمجھنے میں کچھ مدد درکار ہے تو براہ مہربانی اس نمبر پر کال کریں اور ہم آپ کی مدد کے لئے کسی کا انتظام کر دیں گے۔
0116 305 7150

假如閣下需要幫助，用你的語言去明白這些資訊，請致電 0116 305 7150，我們會安排有關人員為你提供幫助。

Jeżeli potrzebujesz pomocy w zrozumieniu tej informacji w Twoim języku, zadzwoń pod numer 0116 305 7150, a my Ci pomożemy.

